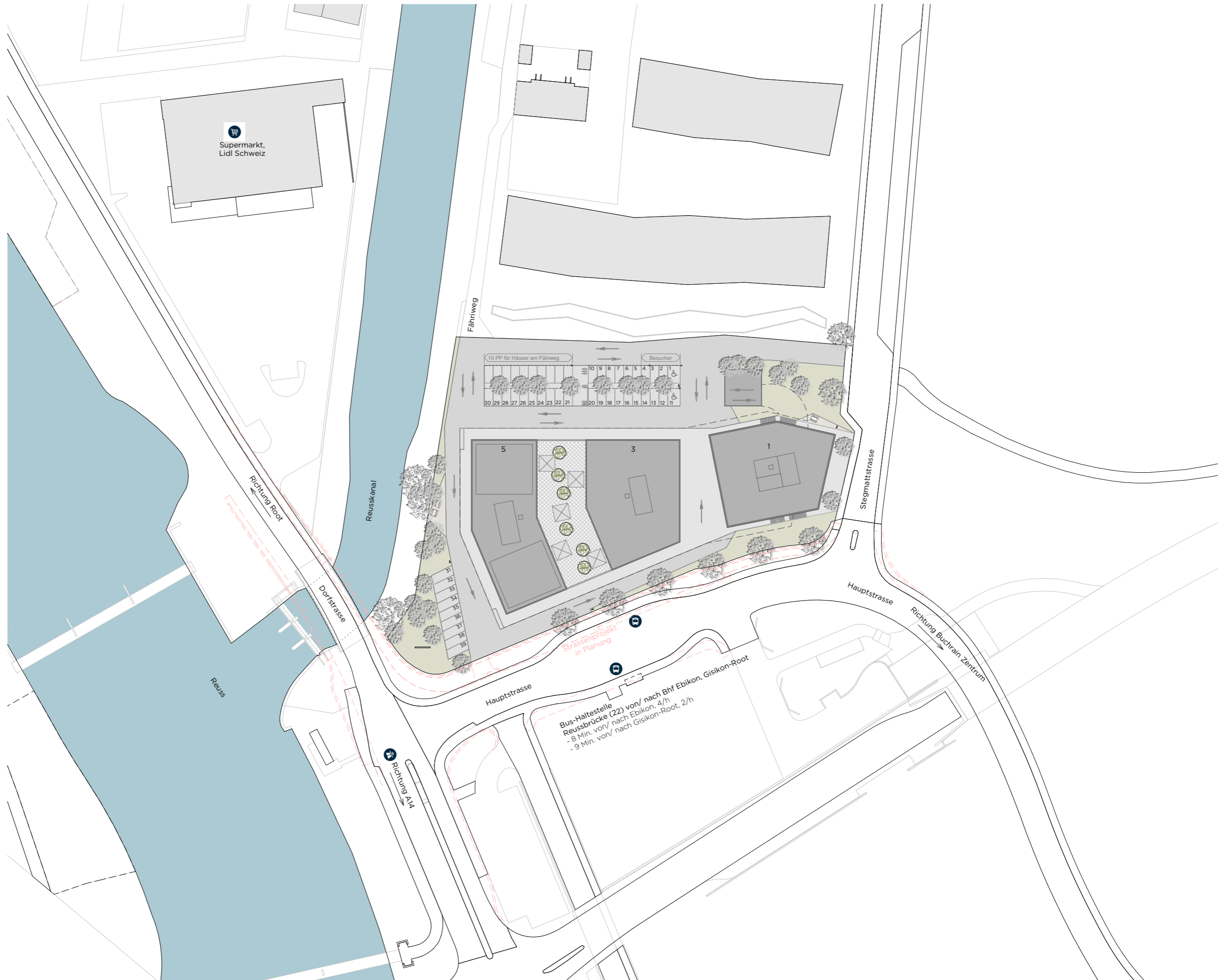
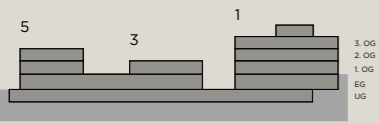
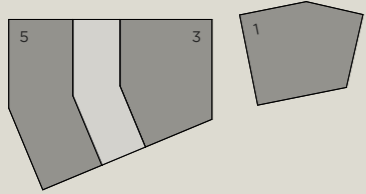
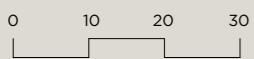


UMGEBUNG

STEGMATTSTRASSE 1/3/5

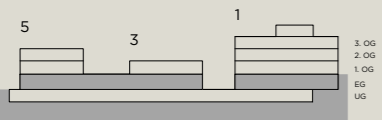
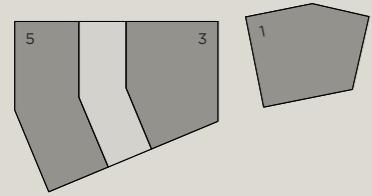


Masstab 1:1000



ERDGESCHOSS

STEGMATTSTRASSE 1/3/5

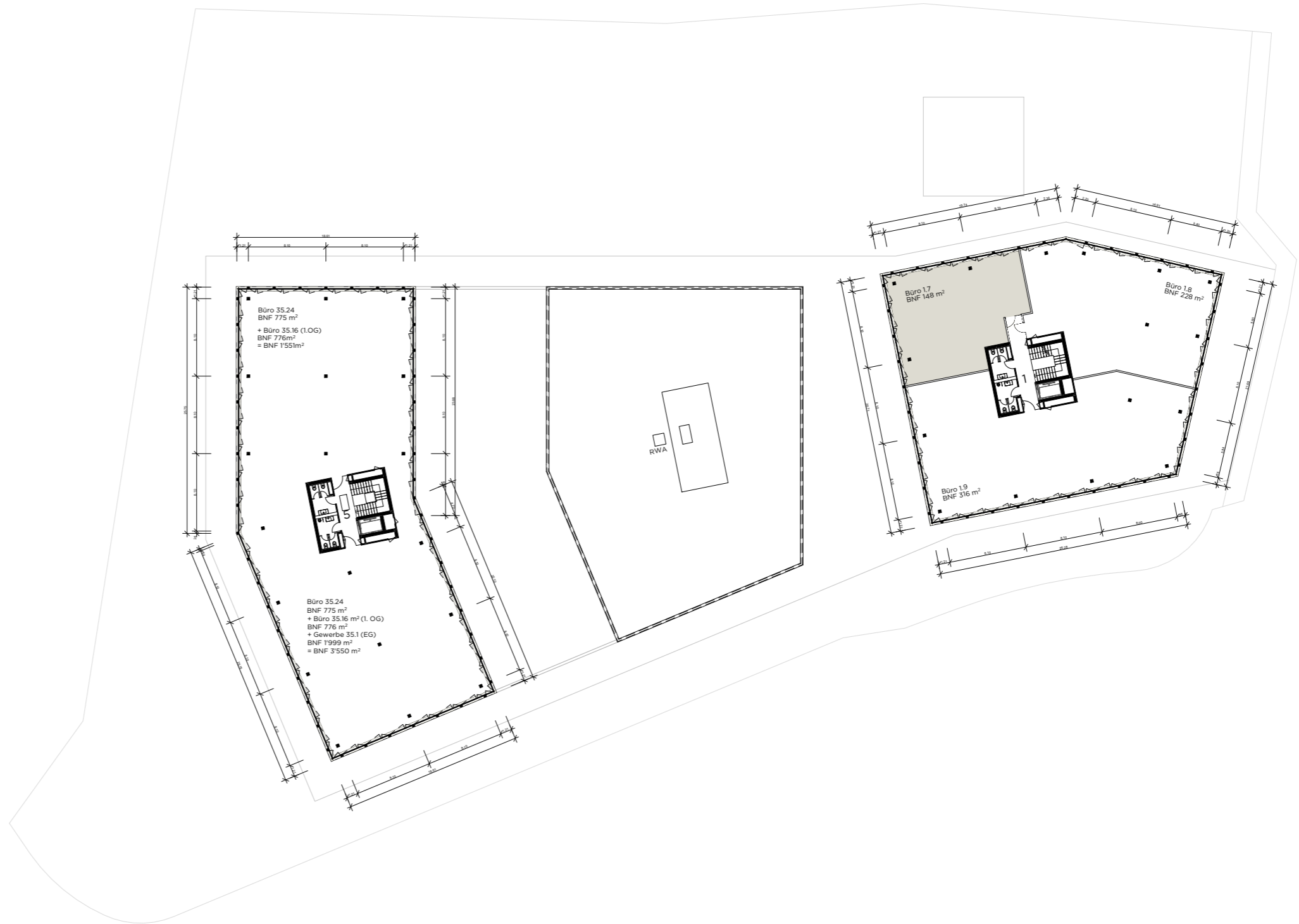
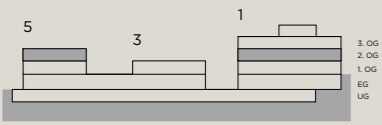
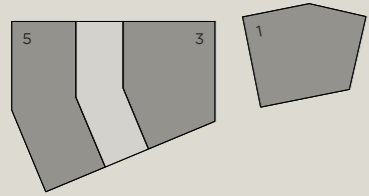


Massstab 1:500



2. OBERGESCHOSS

STEGMATTSTRASSE 1/3/5



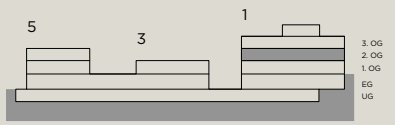
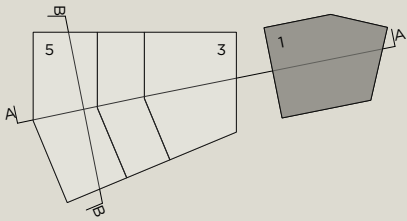
Masstab 1:500



2. OBERGESCHOSS

STEGMATTSTRASSE 1

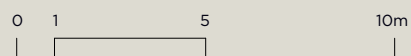
Layoutvorschlag
Büro 1.7



Raumprogramm 1.7

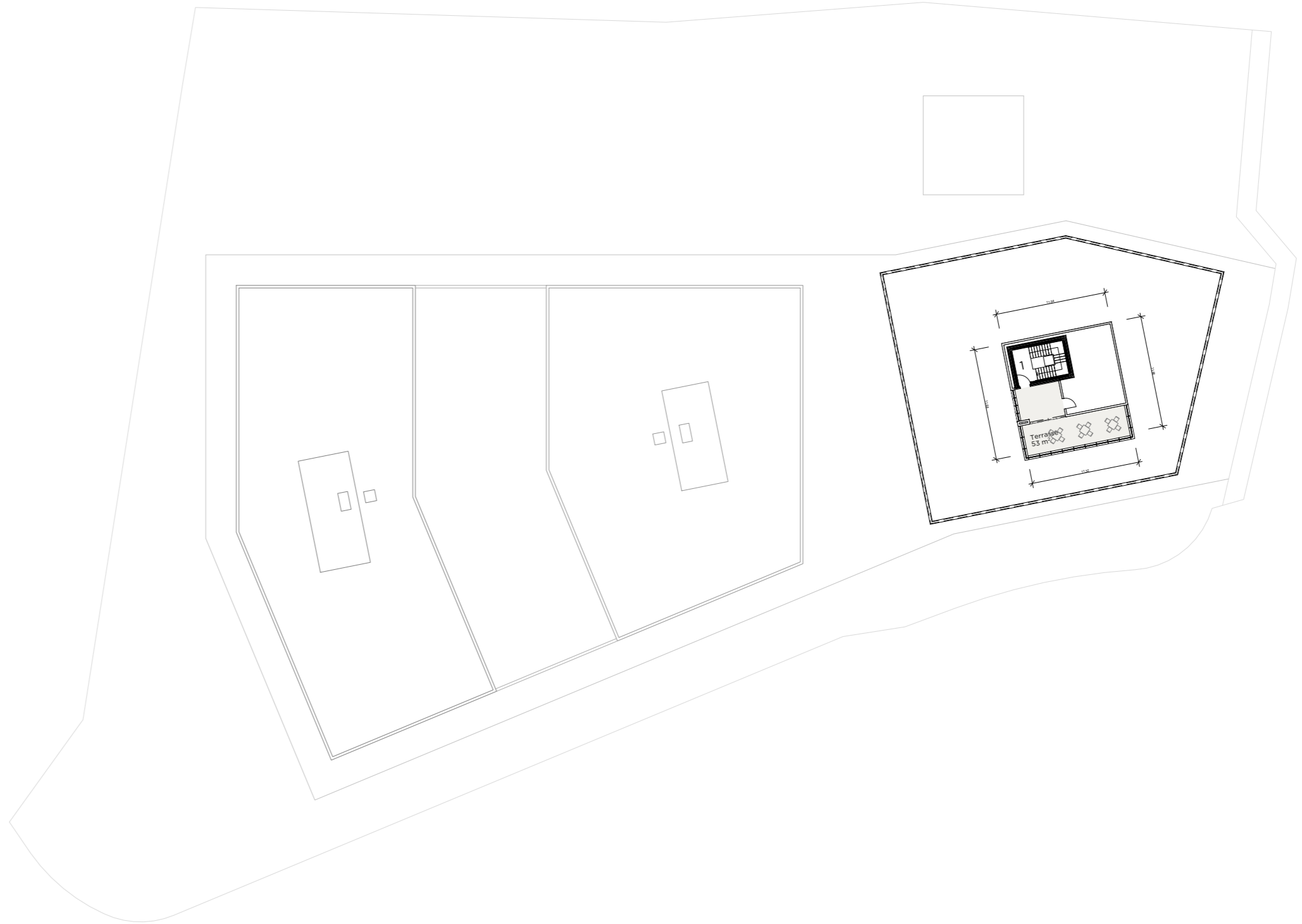
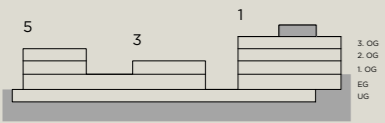
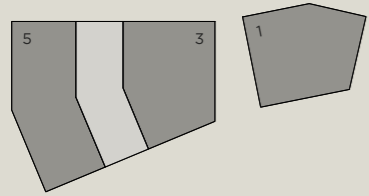
1x	Openspace	12 AP
1x	Einzelbüro	1 AP
1x	Anlauftheke	
1x	Sitzungszimmer	à 6 Pers.
1x	Empfang	
1x	Teeküche	
Total	148 m²	13 AP 11.4 m²/AP

Masstab 1:200



DACHGESCHOSS

STEGMATTSTRASSE 1/3/5

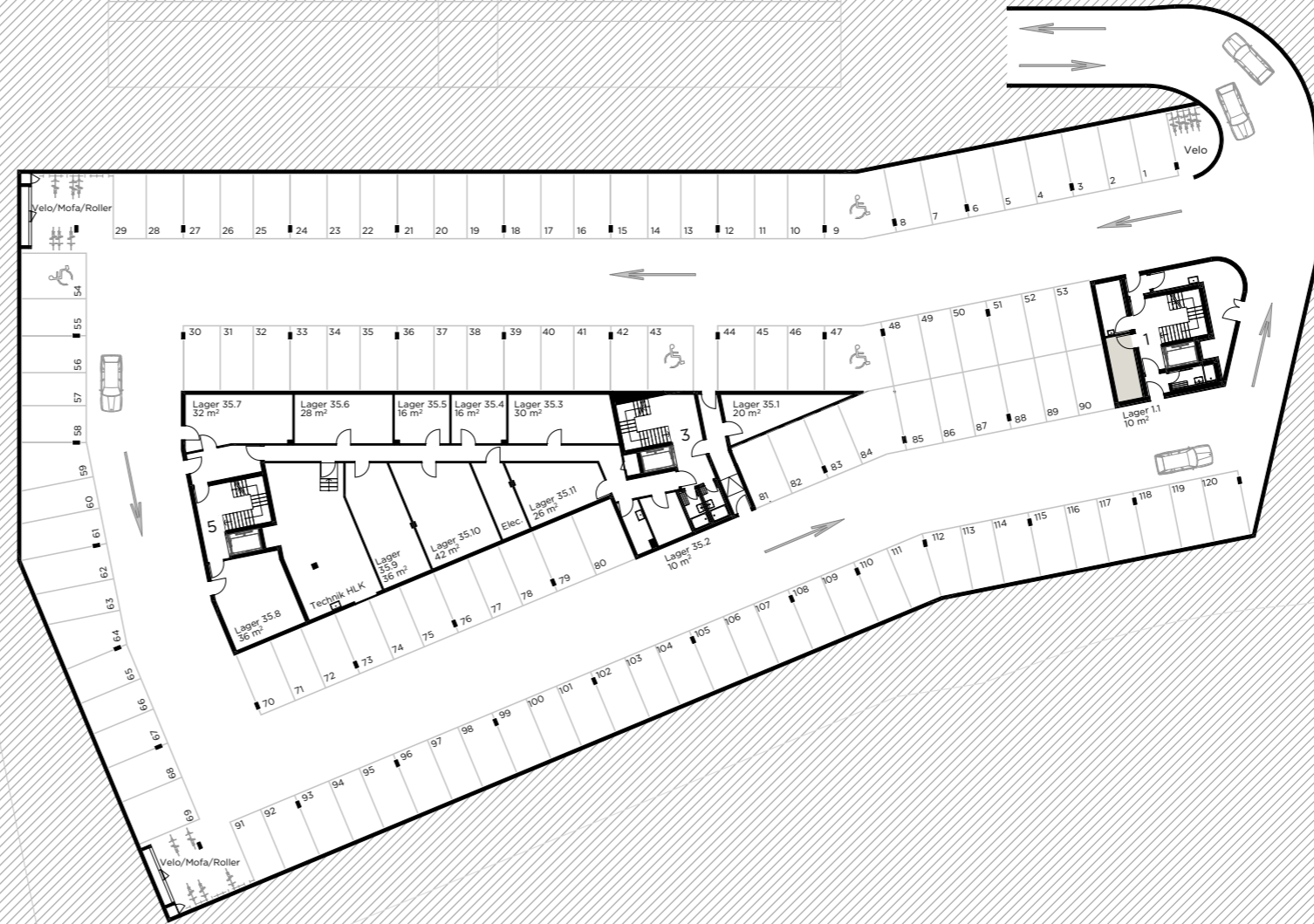
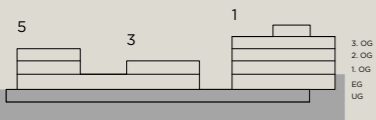
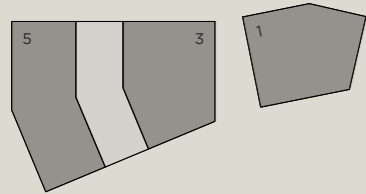


Masstab 1:500



UNTERGESCHOSS

STEGMATTSTRASSE 1/3/5



11 PP überbreit: Nr. 9, 43, 47, 54, 69, 79, 80, 81, 82, 83, 84
 6 PP überlang, 5.60m -6.10m und schmaler als 2.50m: 59-64
 4 PP mit Stütze nicht nach VSS-Norm: 50, 51, 87, 88
 6 PP schmaler als 2.50m: 108-113

Massstab 1:500

