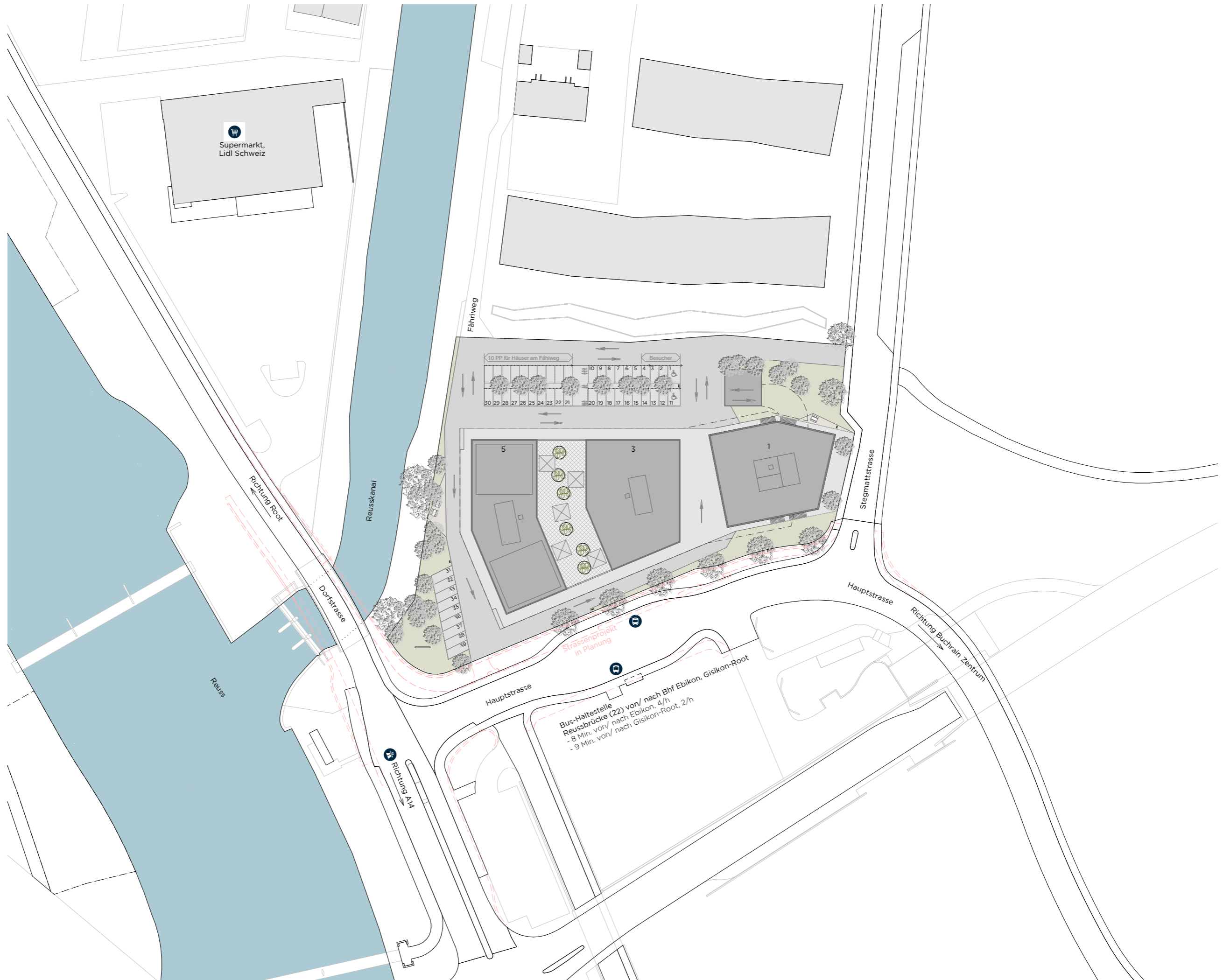
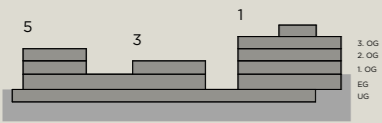
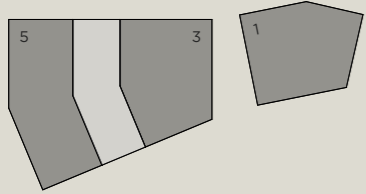
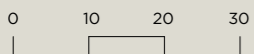


# UMGEBUNG

STEGMATTSTRASSE 1/3/5

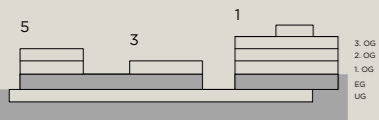
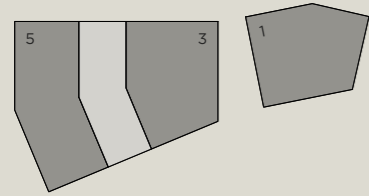


Masstab 1:1000



# ERDGESCHOSS

STEGMATTSTRASSE 1/3/5

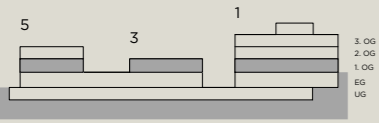
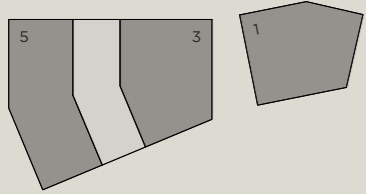


Massstab 1:500

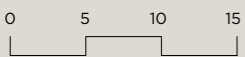


# 1. OBERGESCHOSS

STEGMATTSTRASSE 1/3/5



Masstab 1:500

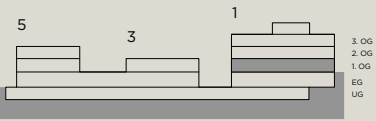
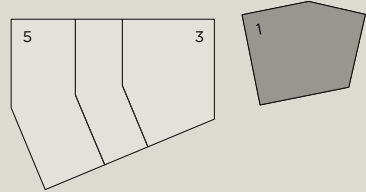


# 1. OBERGESCHOSS

STEGMATTSTRASSE 1

Layoutvorschlag

Büro 1.4.2



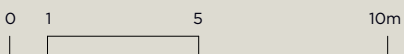
## Raumprogramm 1.4.2

1x	Openspace	14 AP
1x	Einzelbüro	1 AP
1x	Anlauftheke	
1x	Sitzungszimmer	à 6 Pers.
1x	Wartebereich	
1x	Küche / Cafeteria	

**Total 189m<sup>2</sup>**

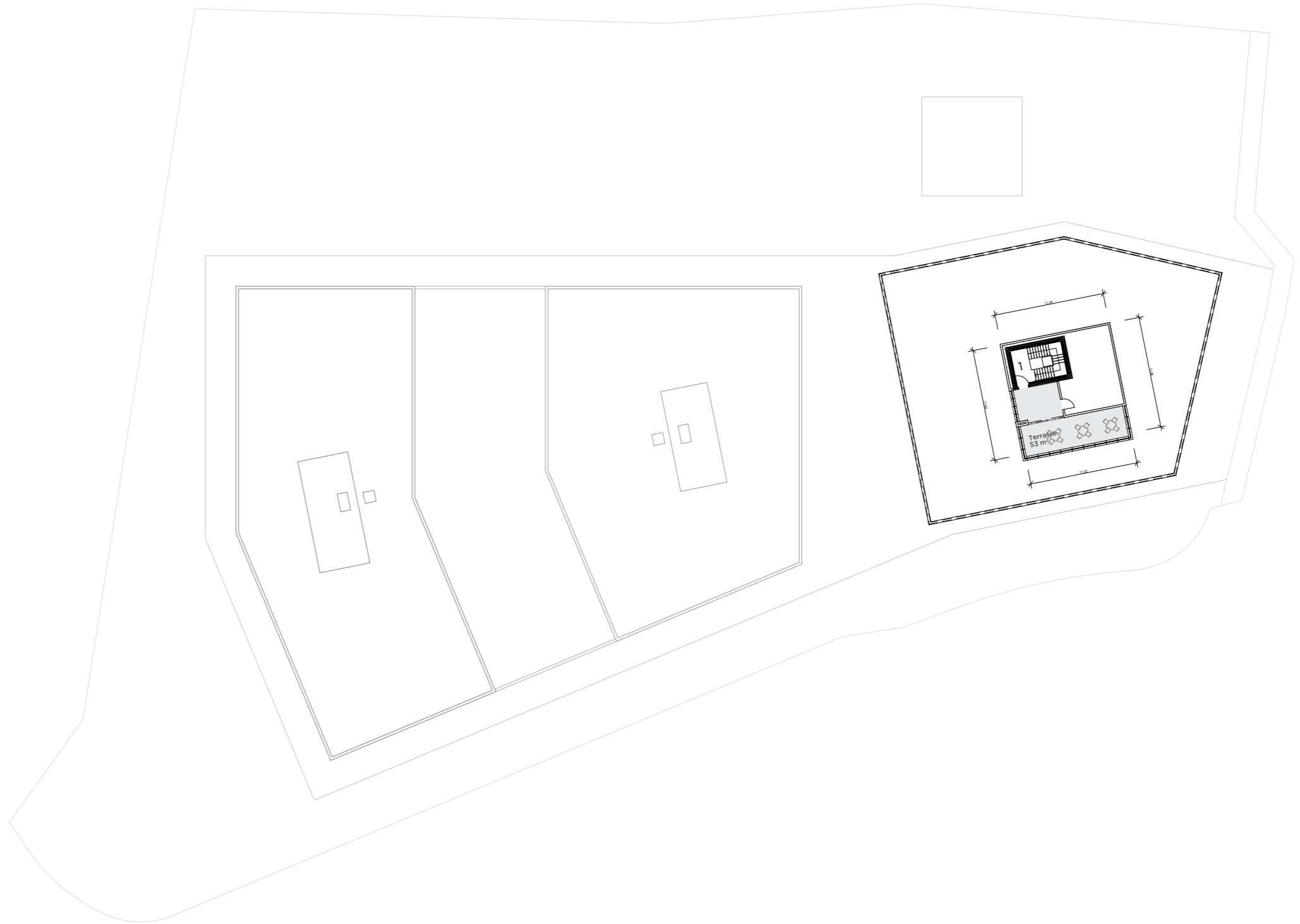
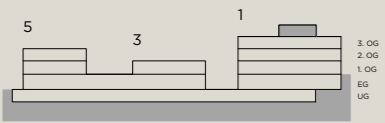
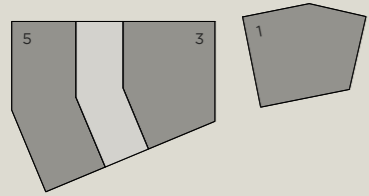
**15 AP**

Masstab 1:200



# DACHGESCHOSS

STEGMATTSTRASSE 1/3/5

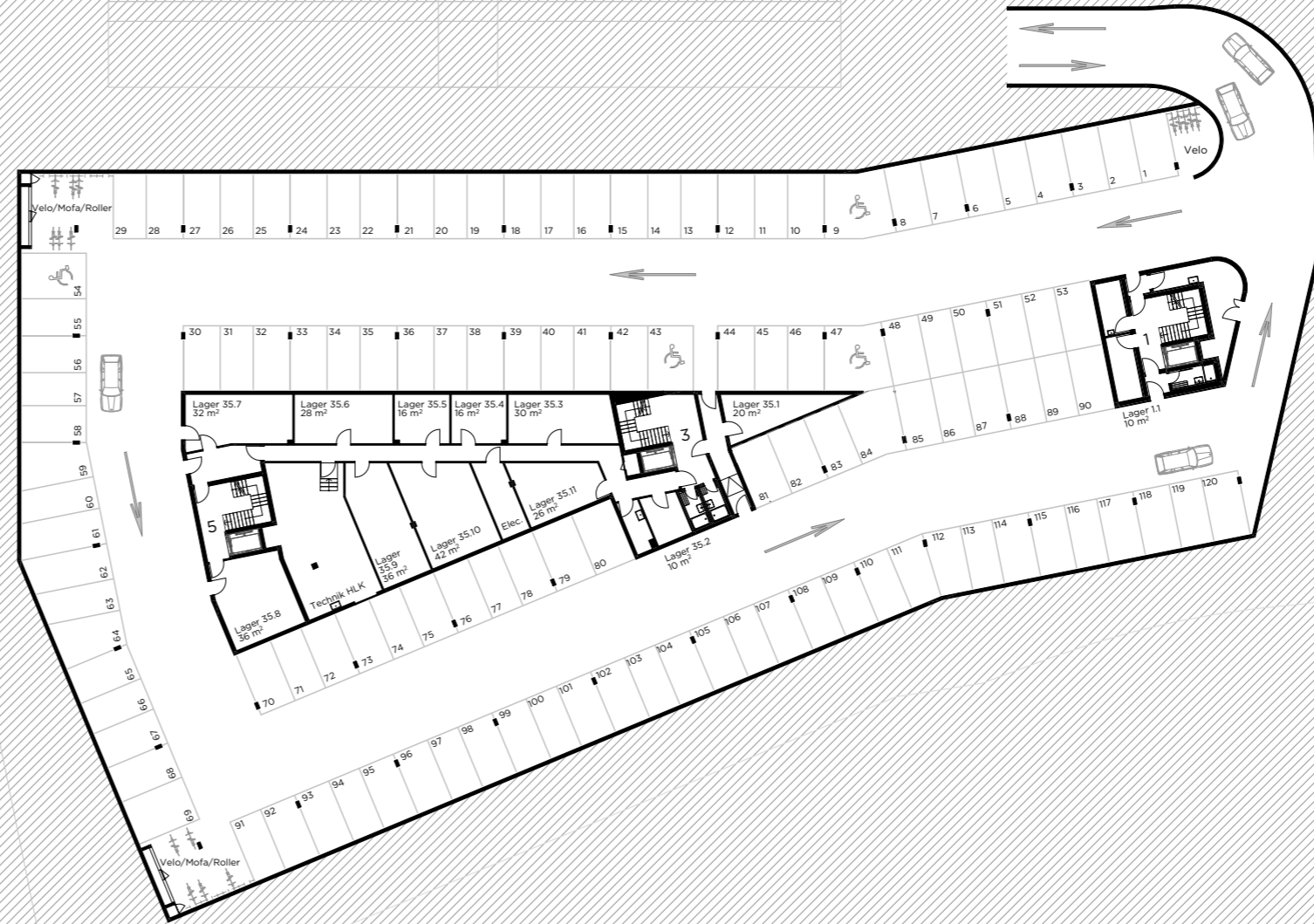
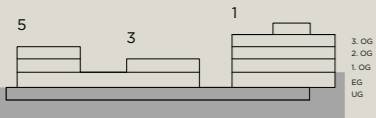
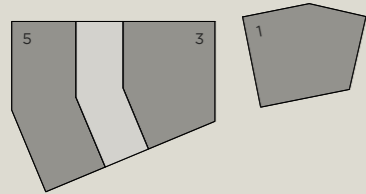


Masstab 1:500



# UNTERGESCHOSS

STEGMATTSTRASSE 1/3/5



11 PP überbreit: Nr. 9, 43, 47, 54, 69, 79, 80, 81, 82, 83, 84  
 6 PP überlang, 5.60m -6.10m und schmaler als 2.50m: 59-64  
 4 PP mit Stütze nicht nach VSS-Norm: 50, 51, 87, 88  
 6 PP schmaler als 2.50m: 108-113

Massstab 1:500

