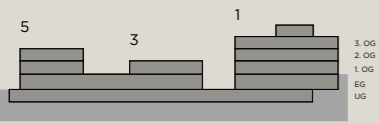
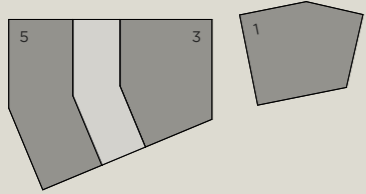
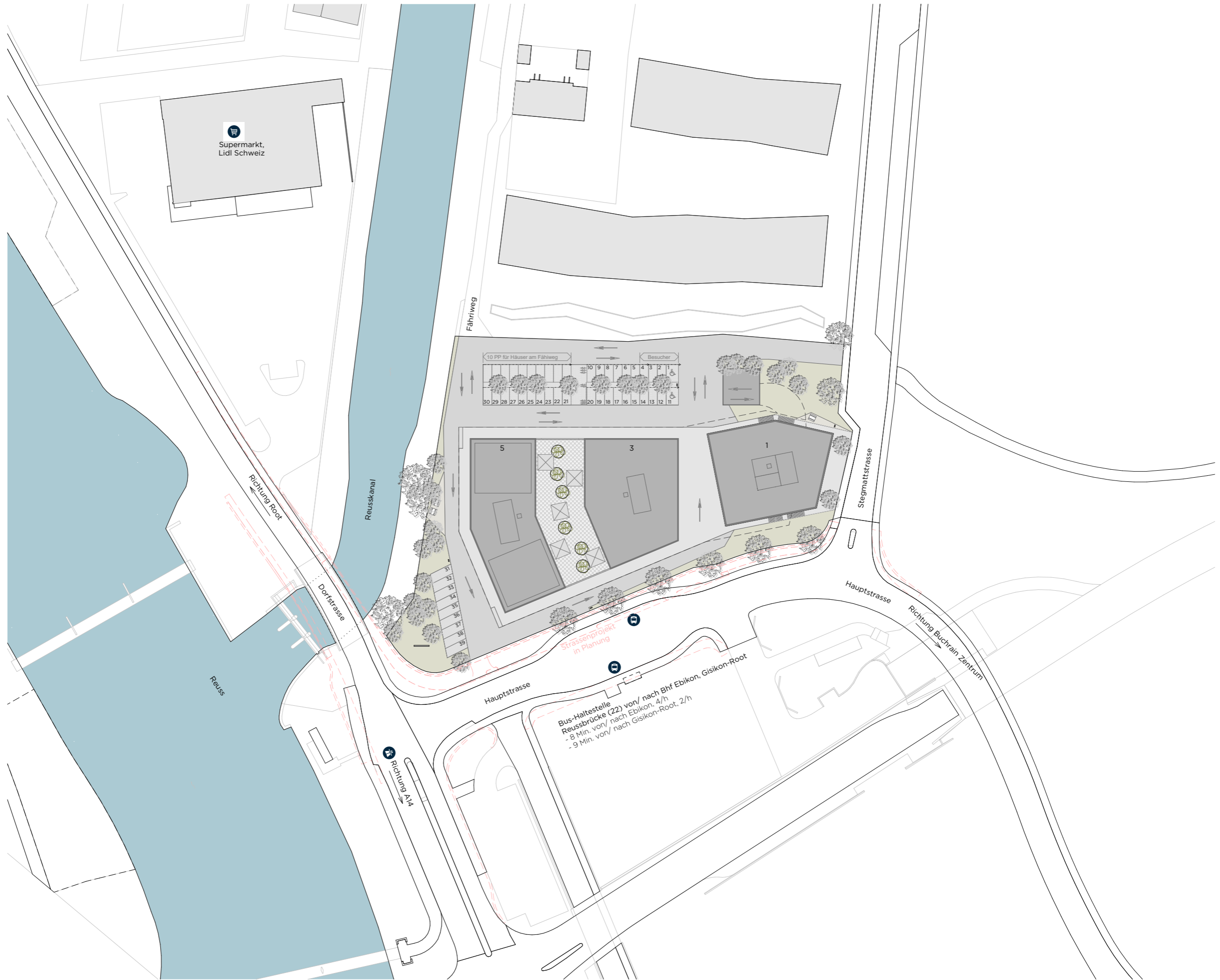
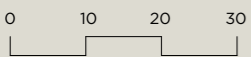


UMGEBUNG

STEGMATTSTRASSE 1/3/5

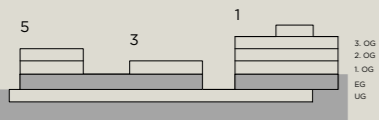
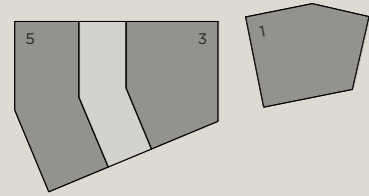


Masstab 1:1000



ERDGESCHOSS

STEGMATTSTRASSE 1/3/5

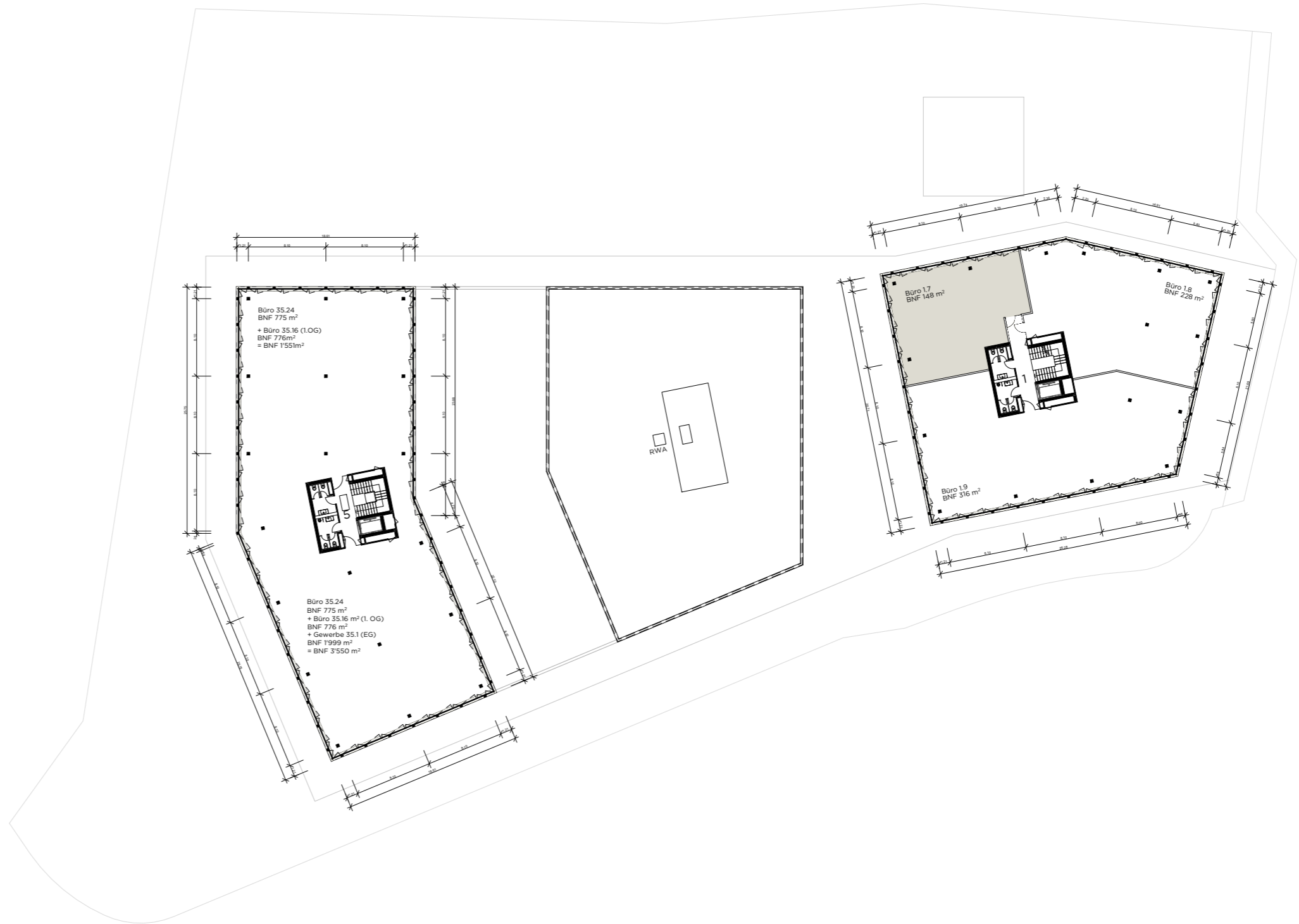
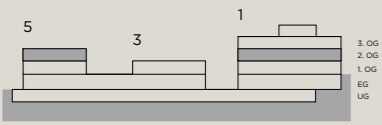
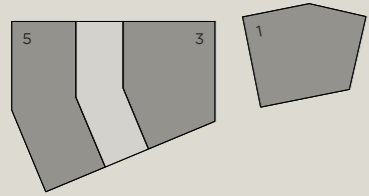


Massstab 1:500



2. OBERGESCHOSS

STEGMATTSTRASSE 1/3/5



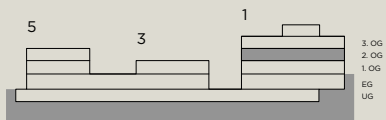
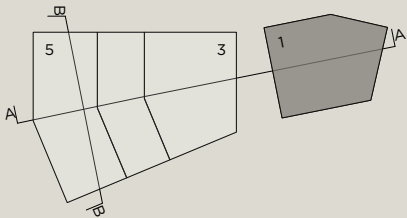
Masstab 1:500



2. OBERGESCHOSS

STEGMATTSTRASSE 1

Layoutvorschlag
Büro 1.7 / 1.8 / 1.9



Raumprogramm 1.7

1x	Openspace	12 AP
1x	Einzelbüro	1 AP
1x	Anlauftheke	
1x	Sitzungszimmer	à 6 Pers.
1x	Empfang	
1x	Teeküche	

Total 148 m² 13 AP
11.4 m²/AP

Raumprogramm 1.8

1x	Openspace	16 AP
1x	Einzelbüro	1 AP
1x	Anlauftheke	
2x	Sitzungszimmer	à 8 Pers.
1x	Servicezone	
1x	Empfang / Wartebereich	
1x	Küche / Cafeteria	

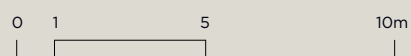
Total 228 m² 17 AP
13.4 m²/AP

Raumprogramm 1.9

1x	Openspace	26 AP
1x	Einzelbüro	1 AP
1x	Anlauftheke	
1x	Sitzungszimmer gross	à 6 Pers.
1x	offene Besprechungszone	
2x	Telefonkabine	
1x	Empfang / Wartebereich	
1x	Teeküche	

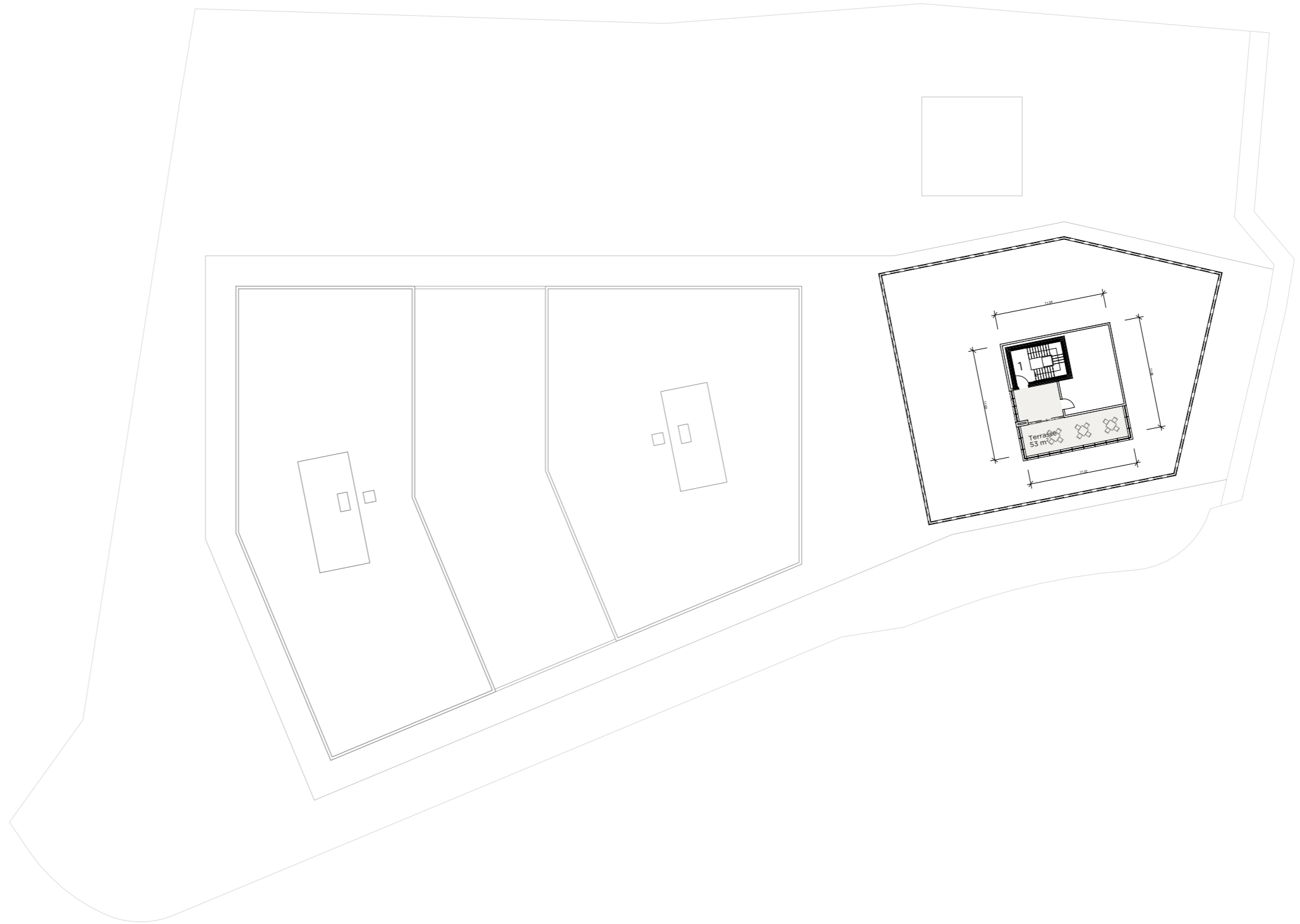
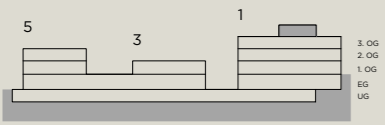
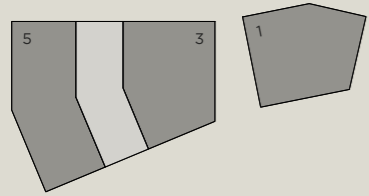
Total 316 m² 27 AP
11.7 m²/AP

Masstab 1:200



DACHGESCHOSS

STEGMATTSTRASSE 1/3/5

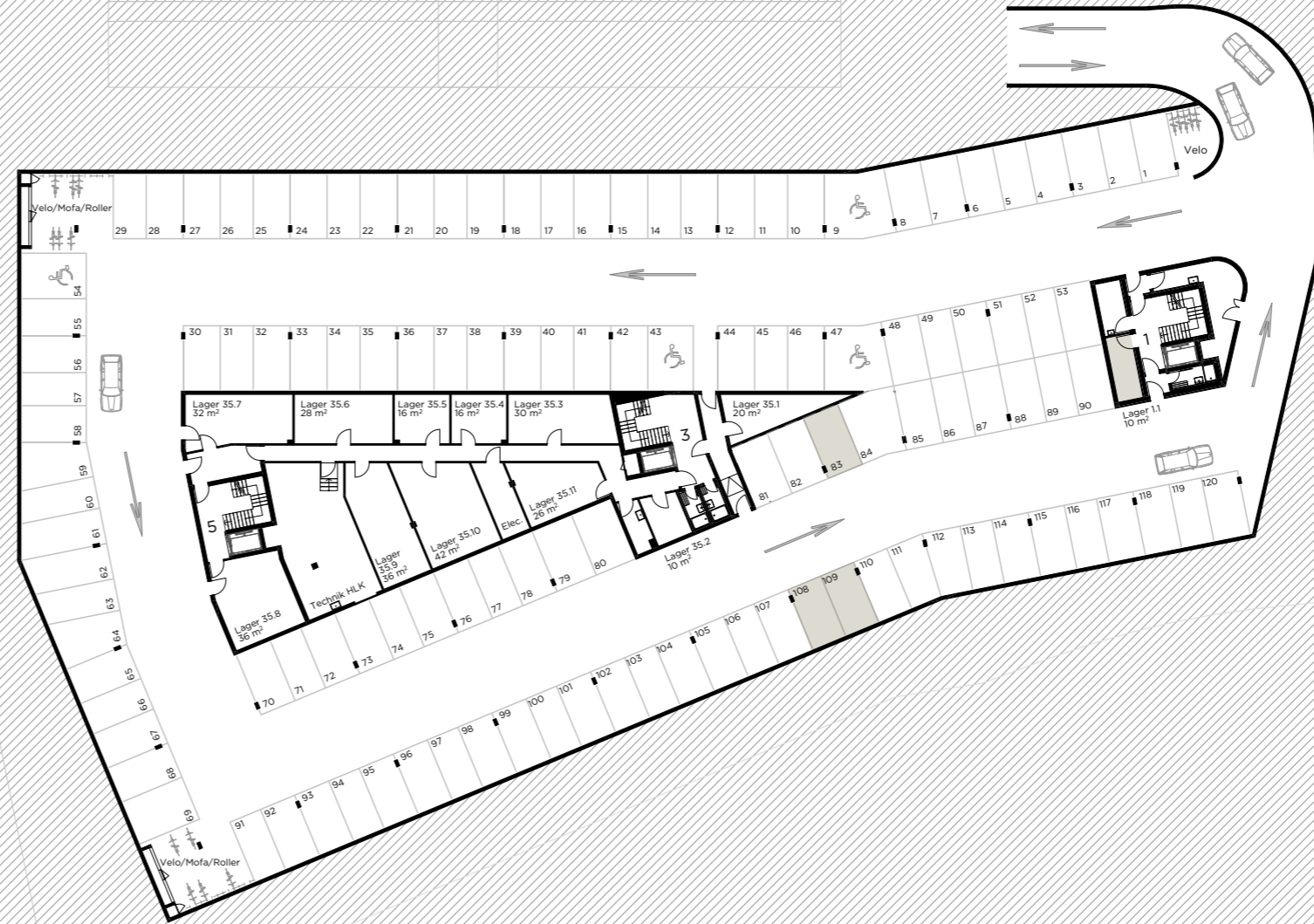
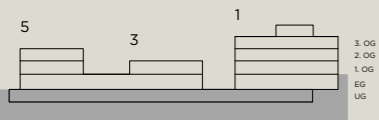
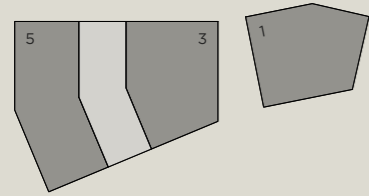


Masstab 1:500



UNTERGESCHOSS

STEGMATTSTRASSE 1/3/5



11 PP überbreit: Nr. 9, 43, 47, 54, 69, 79, 80, 81, 82, 83, 84
 6 PP überlang, 5.60m -6.10m und schmaler als 2.50m: 59-64
 4 PP mit Stütze nicht nach VSS-Norm: 50, 51, 87, 88
 6 PP schmaler als 2.50m: 108-113

Masstab 1:500

