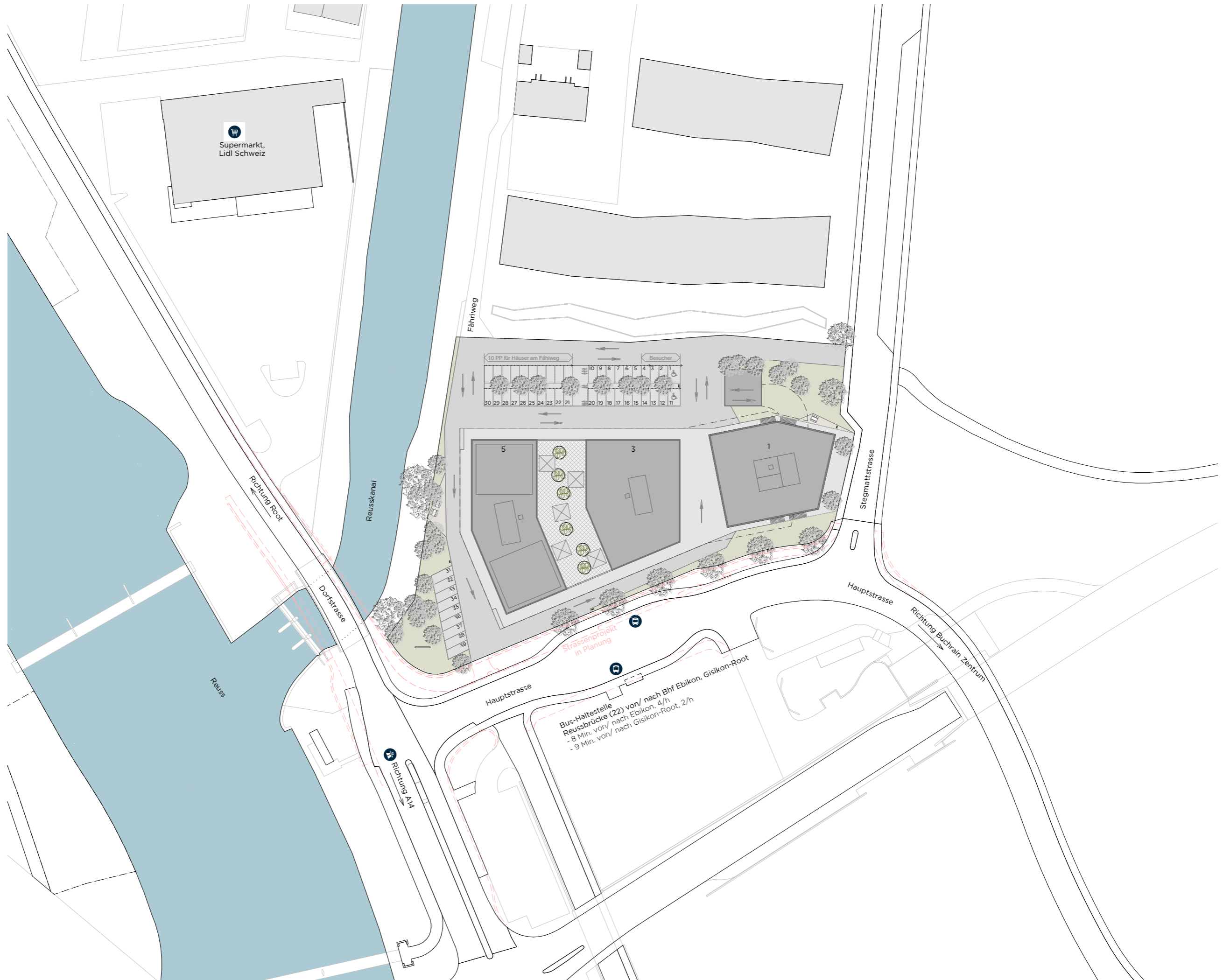
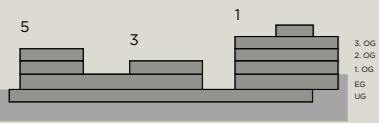
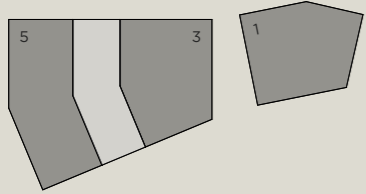
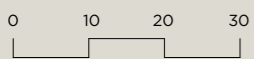


UMGEBUNG

STEGMATTSTRASSE 1/3/5

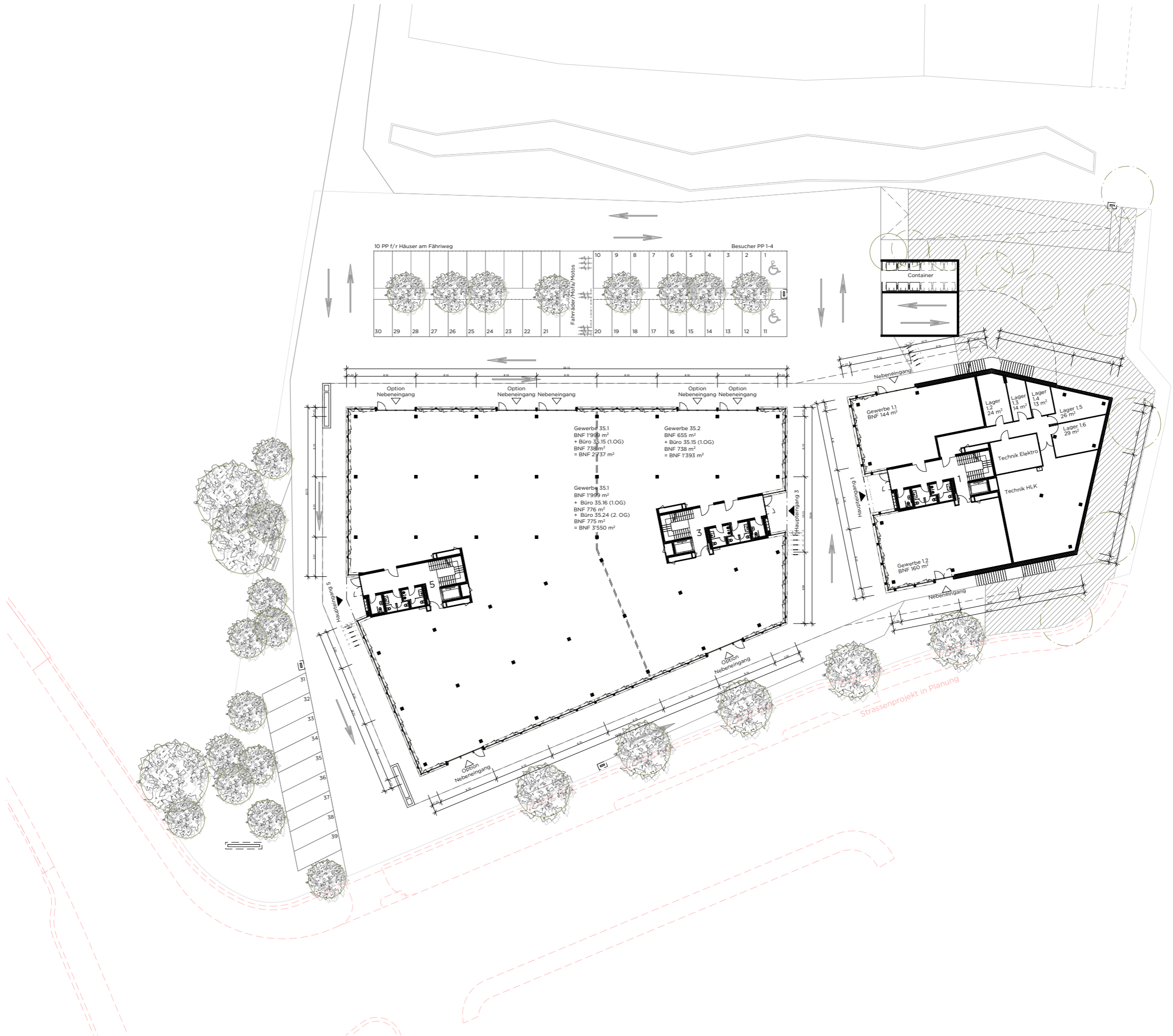
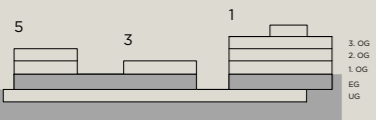
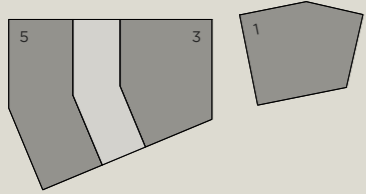


Masstab 1:1000



ERDGESCHOSS

STEGMATTSTRASSE 1/3/5

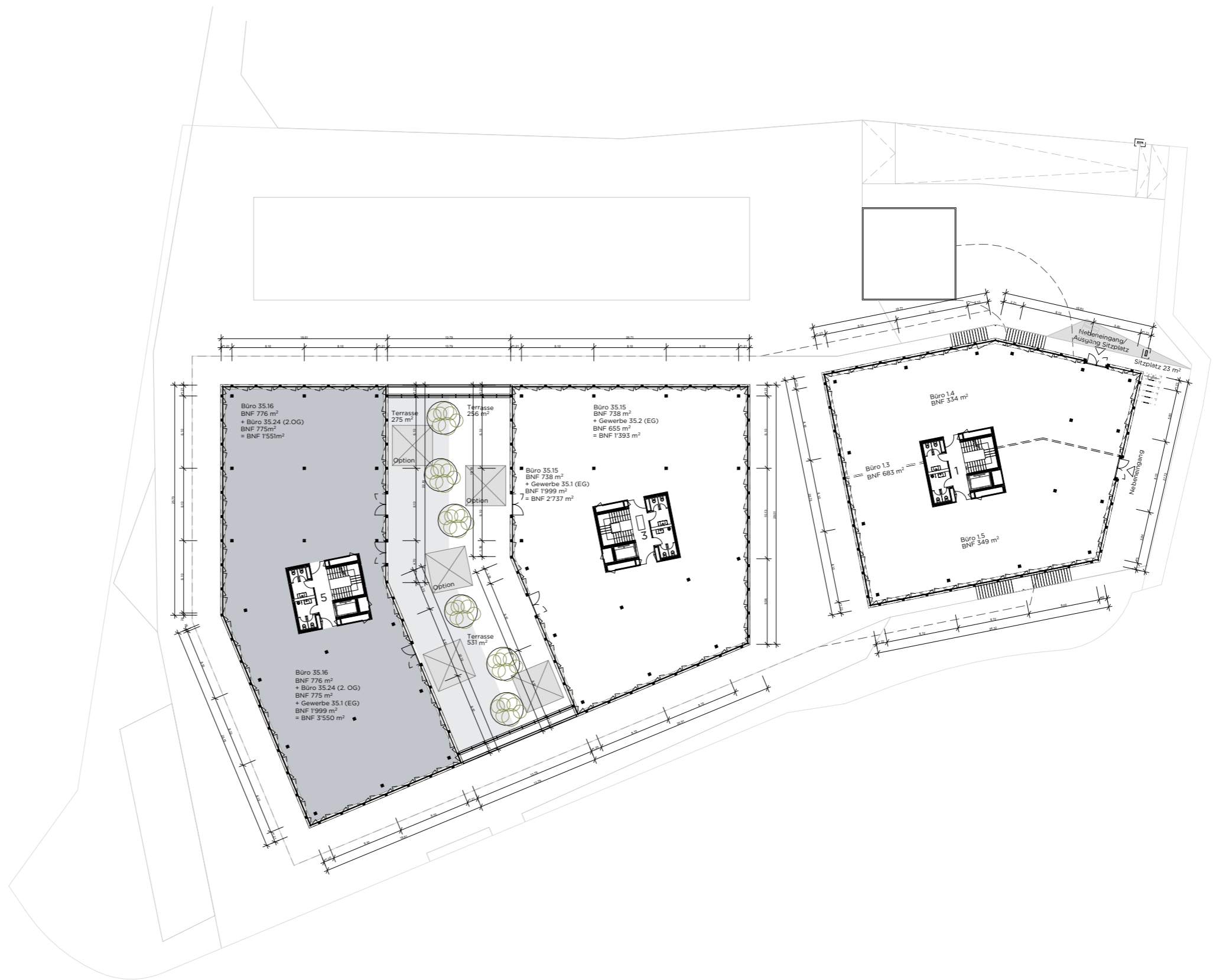
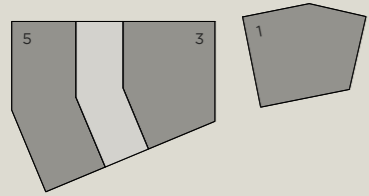


Masstab 1:500



1. OBERGESCHOSS

STEGMATTSTRASSE 1/3/5



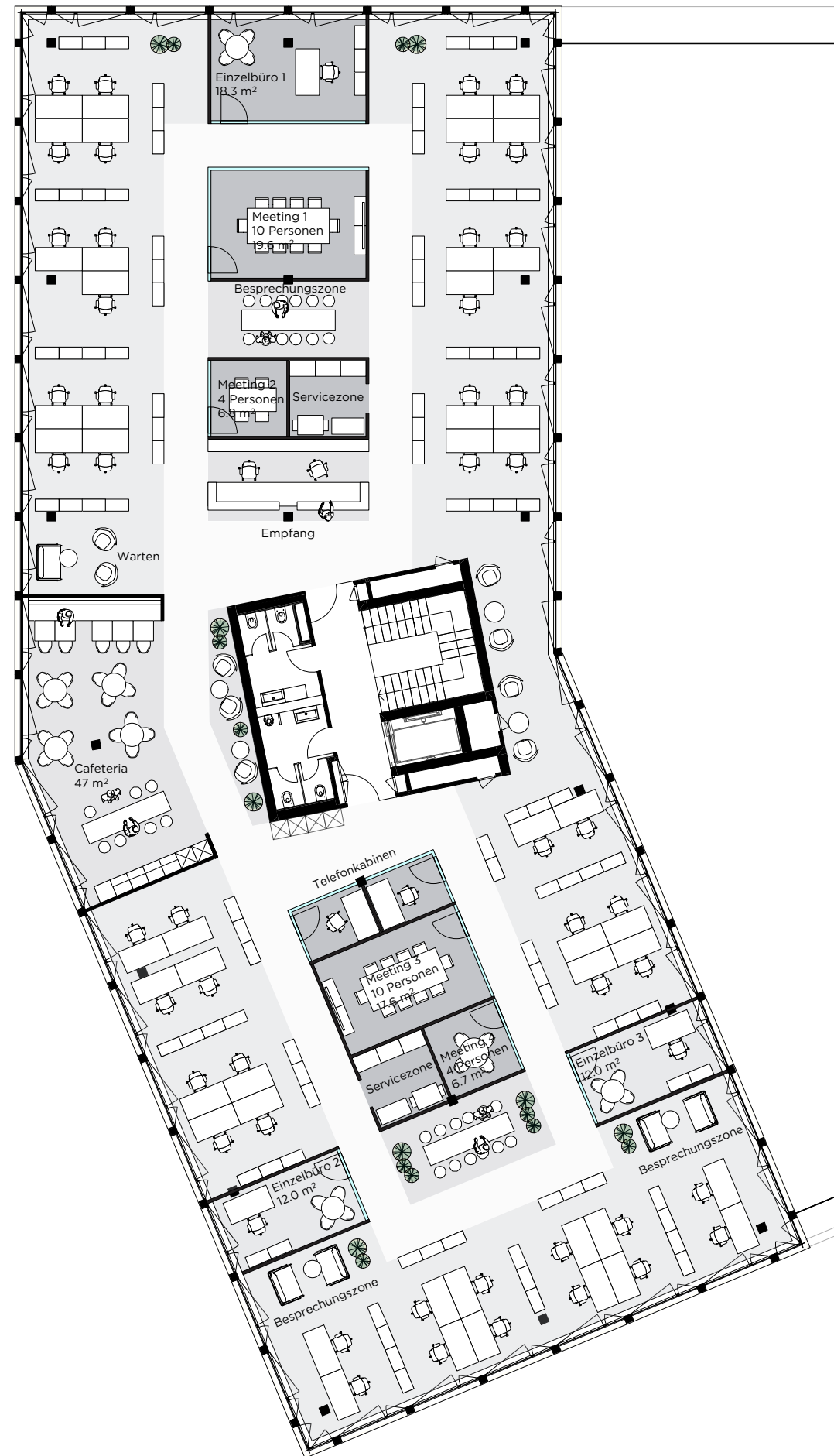
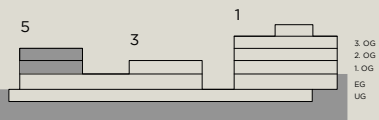
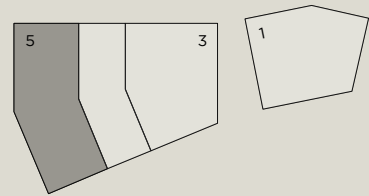
Masstab 1:500



1./2. OBERGESCHOSS

STEGMATTSTRASSE 5

Layoutvorschlag
Büro 35.16 / 35.24

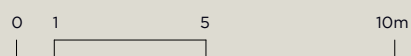


Raumprogramm Büro 35.16 / 35.24

1x	Openspace	48 AP
3x	Einzelbüro	3 AP
1x	Empfang	2 AP
2x	Sitzungszimmer gross à 10 Pers.	
2x	Sitzungszimmer klein à 4 Pers.	
6x	offene Besprechungszone	
2x	Telefonkabine	
2x	Service-Zone	
1x	Empfang / Wartebereich	
1x	Küche / Cafeteria	

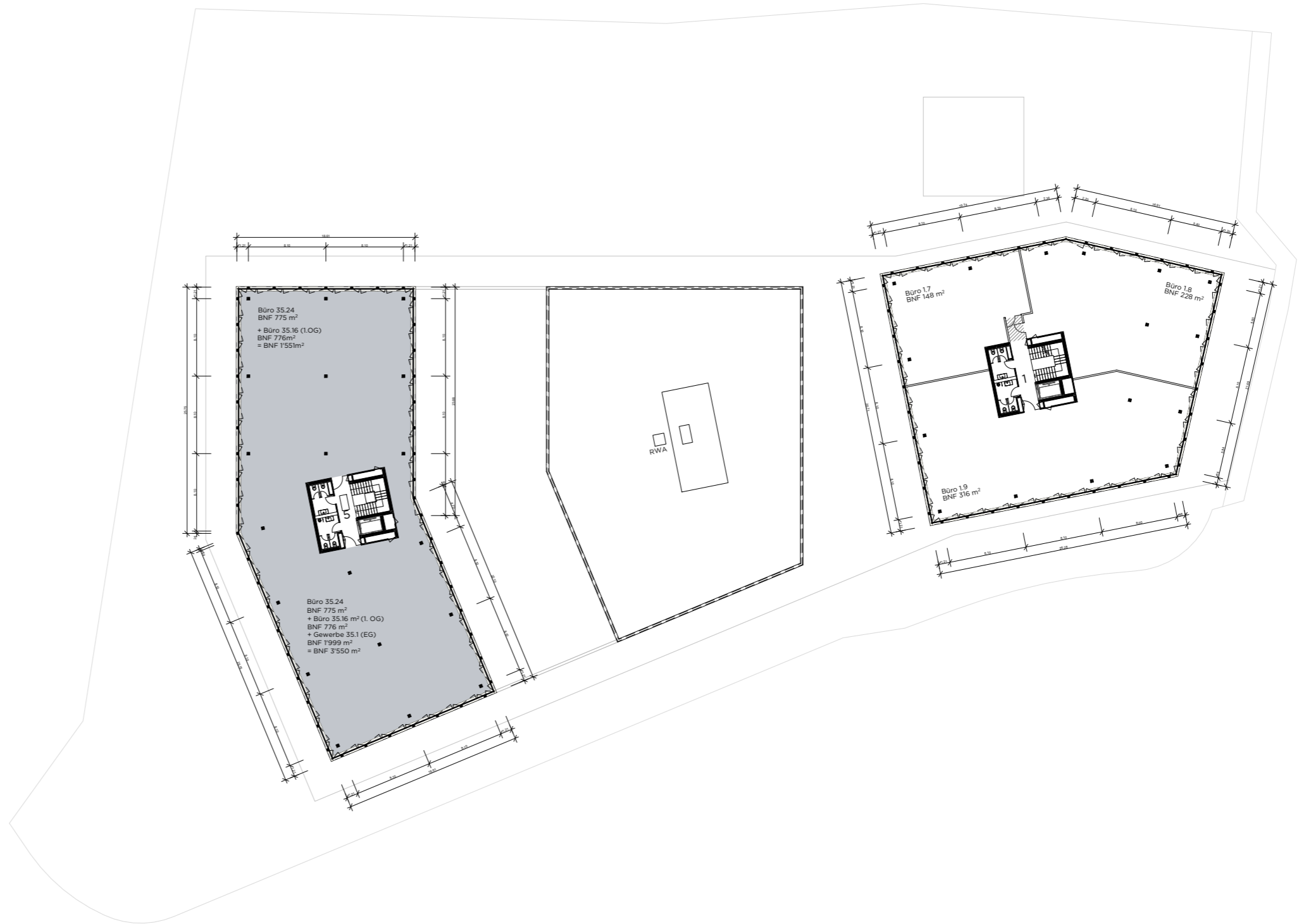
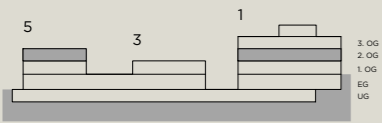
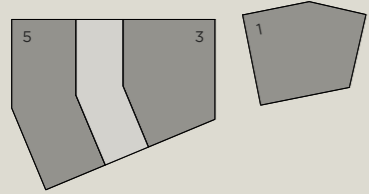
Total 776/775 m² 53 AP
14.6 m²/AP

Masstab 1:200



2. OBERGESCHOSS

STEGMATTSTRASSE 1/3/5

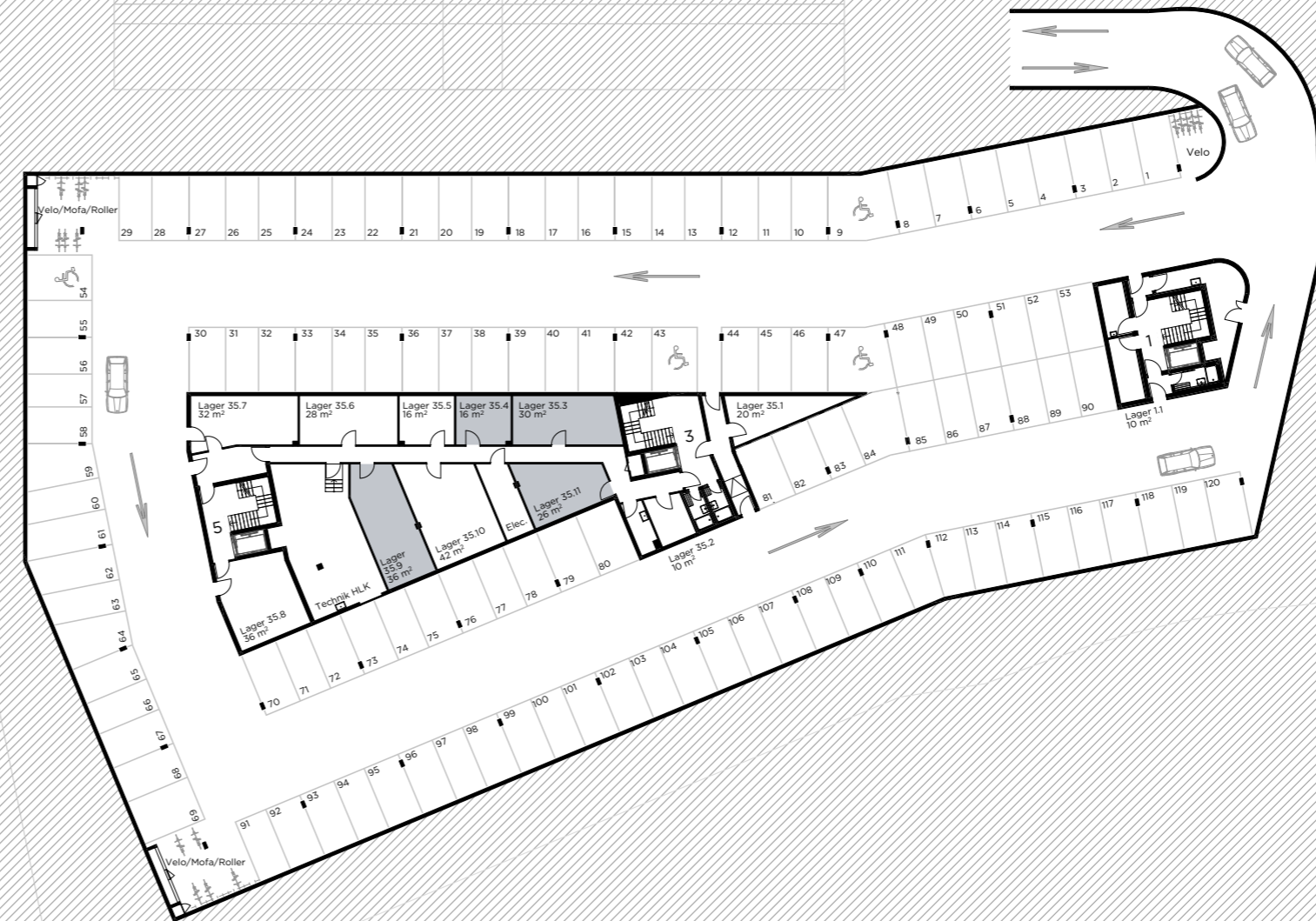
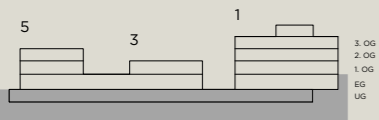
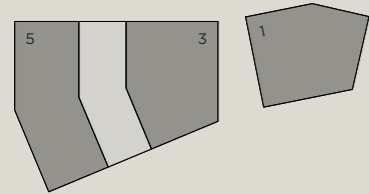


Masstab 1:500



UNTERGESCHOSS

STEGMATTSTRASSE 1/3/5



11 PP überbreit: Nr. 9, 43, 47, 54, 69, 79, 80, 81, 82, 83, 84
 6 PP überlang, 5.60m -6.10m und schmaler als 2.50m: 59-64
 4 PP mit Stütze nicht nach VSS-Norm: 50, 51, 87, 88
 6 PP schmaler als 2.50m: 108-113

Massstab 1:500

