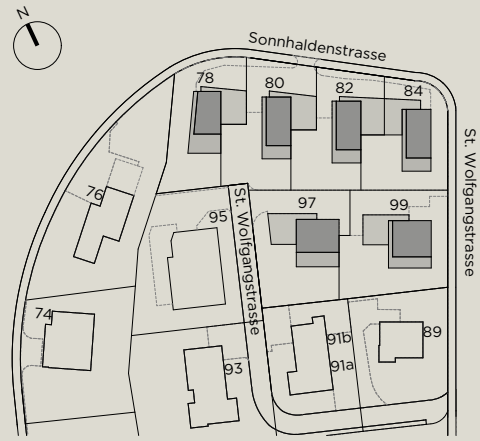


Umgebung

Situation

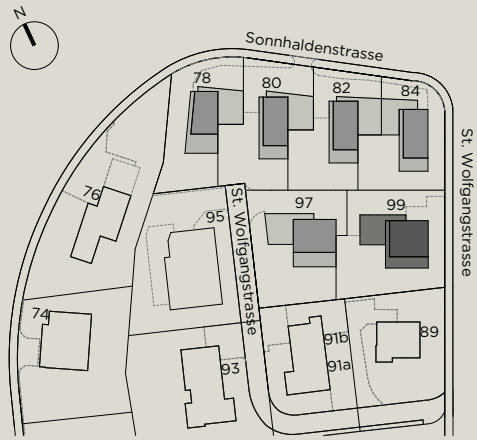


Masstab 1:300

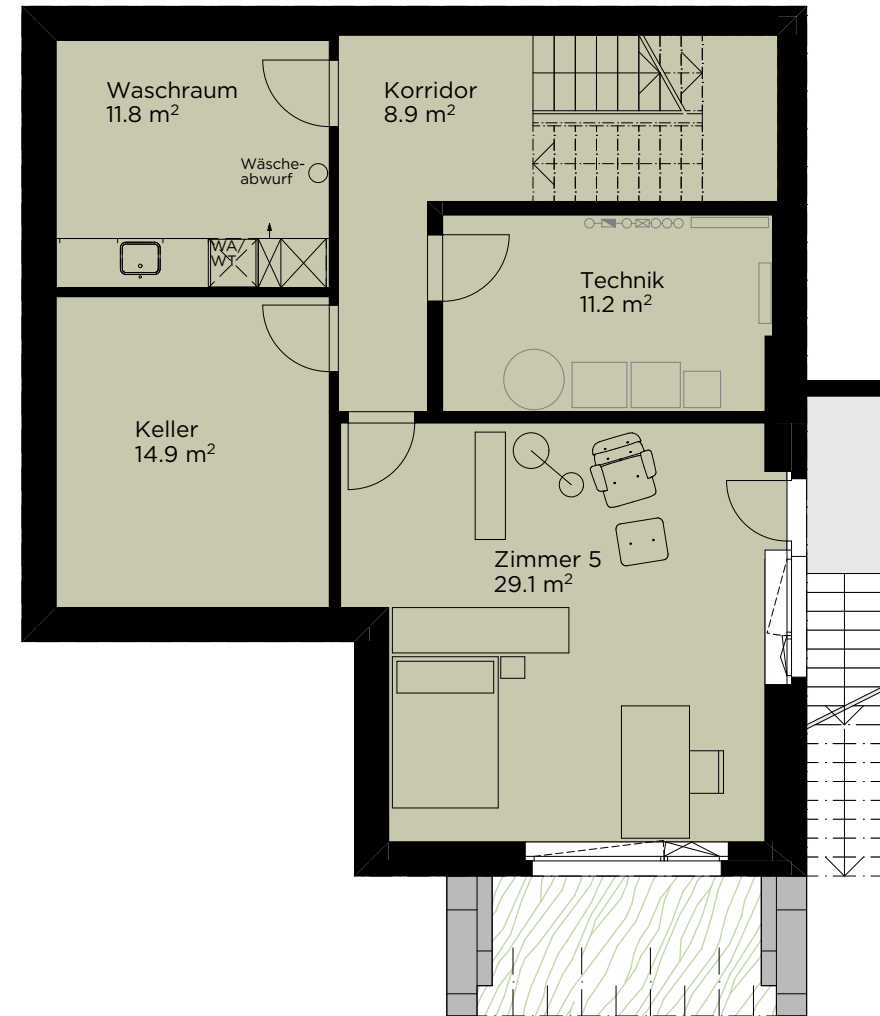


Untergeschoss

St. Wolfgangstrasse 99

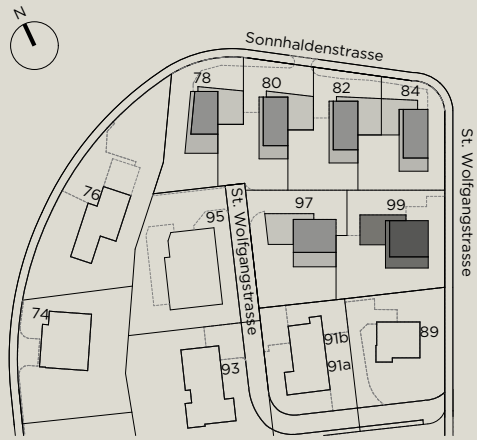


Masstab 1:100

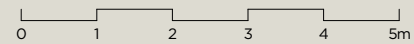


Erdgeschoss

St. Wolfgangstrasse 99



Masstab 1:100

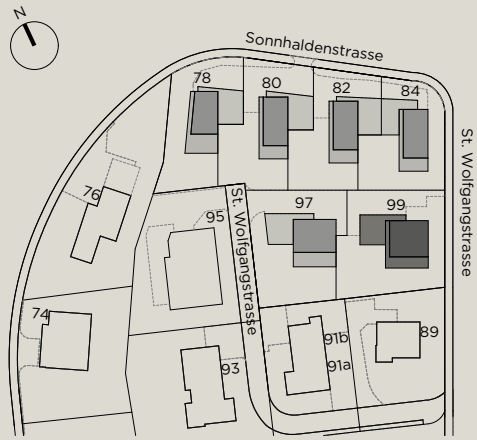


7.5 Zimmer-Einfamilienhaus

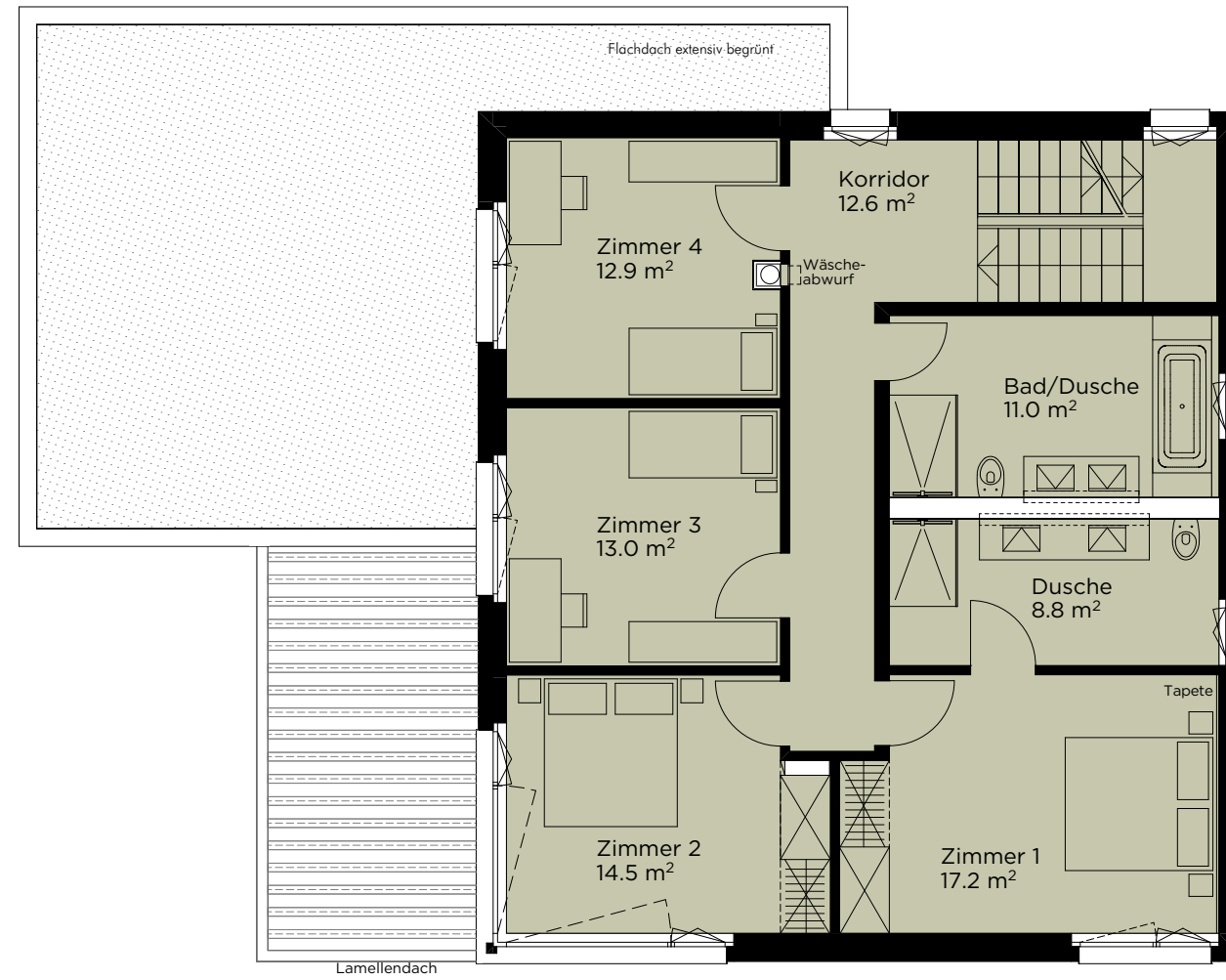
BNF	276 m ²
BGF	438 m ²
Grundstücksfläche	625 m ²
Gebäudefläche EG	151 m ²
Aussennutzfläche	336 m ²
Terrasse Attika	43 m ²

Obergeschoss

St. Wolfgangstrasse 99

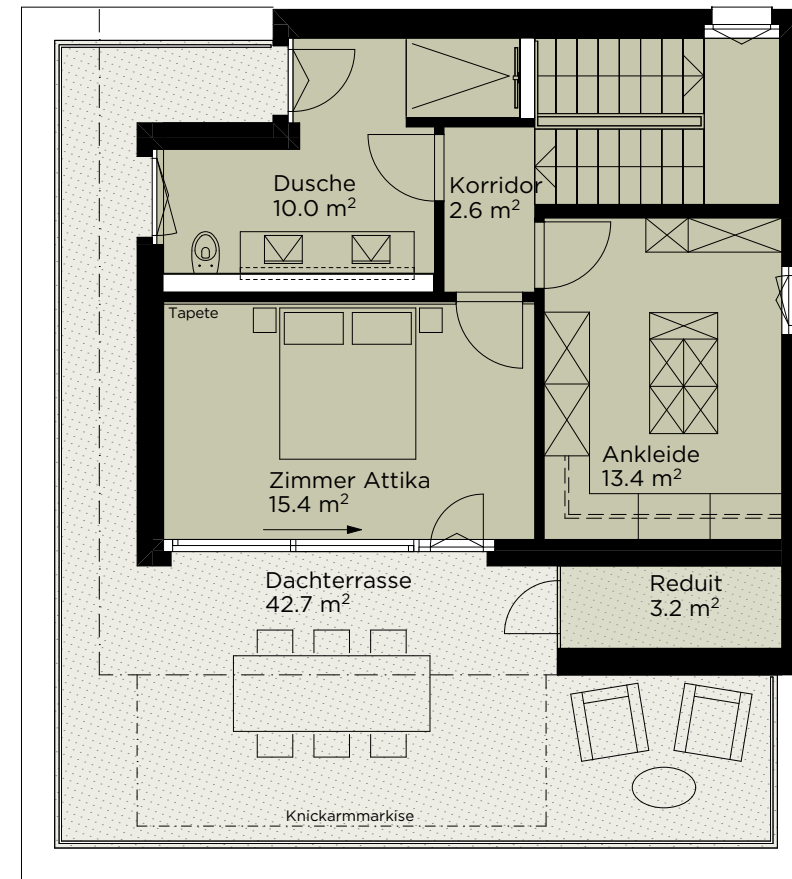
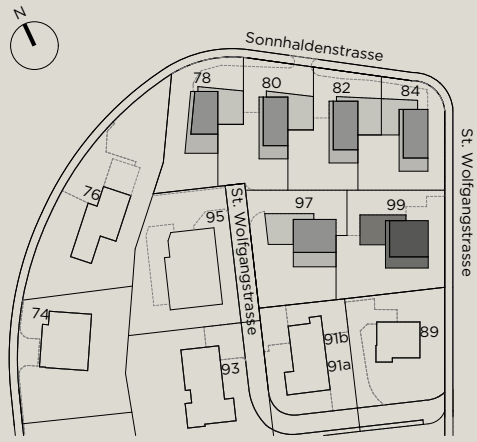


Masstab 1:100



Attikageschoss

St. Wolfgangstrasse 99



Masstab 1:100

